

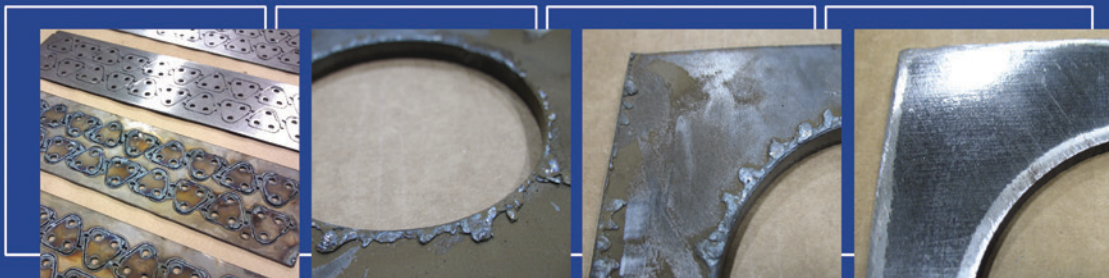
# SERIES 1200 SLAG GRINDER



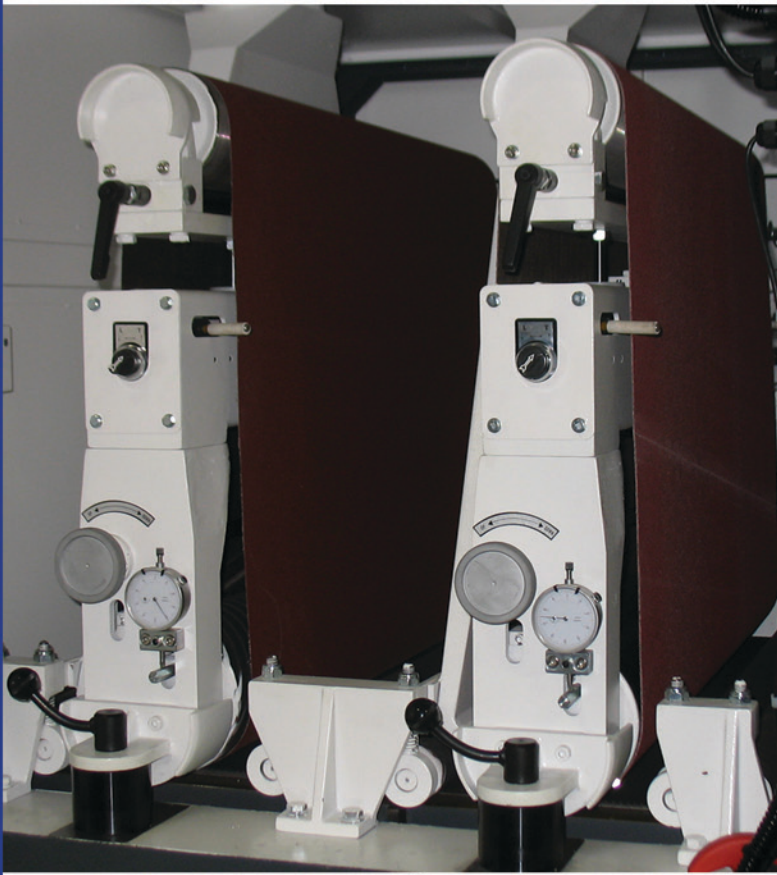
## SERIES 1200 - DRY METAL

THE 1200 SERIES SLAG GRINDER WAS DESIGNED AROUND AN INCREASING DEMAND FOR A MORE ECONOMICAL VERSION OF OUR WIDELY POPULAR 2200 SERIES SLAG GRINDER. UNTIL NOW, LOWER PRODUCTION SHOPS EITHER CONTINUED TO SUFFER WITH HAND PROCESSING OR STRETCHED THEIR BUDGET TO INVEST IN AUTOMATION. KEEPING THIS IN MIND, THE 1200 SERIES MACHINE COMPONENTS WERE SELECTED BASED ON SMALLER PRODUCTION RUNS AND INTERMITTENT USE.

THE SOLUTION STARTED WITH RETAINING KEY COMPONENTS, DESIGN, AND QUALITY FROM OUR HEAVY DUTY OFFERINGS. THEN EVALUATING AND ADJUSTING THE CHOSEN COMPONENTS TO REFLECT THE DECREASED STRESS OF LOWER PRODUCTION. THIS RESULTS IN PART QUALITY COMPARABLE TO THE HIGH PRODUCTION MACHINES WHILE REDUCING THE ACCOMPANYING EXPENSE.



# FEATURES AND SPECS

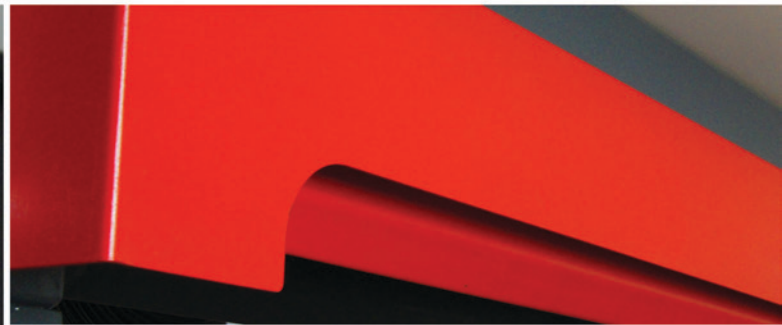
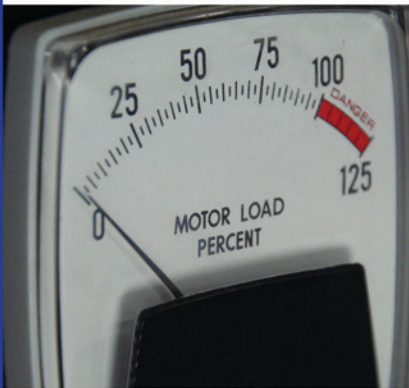


## STANDARD FEATURES

- COMPACT DESIGN
- 37" WIDTH
- 15/10HP MAIN MOTORS
- INFEED STOP BAR
- DOOR SAFETY INTERLOCK
- INFEED & OUTFEED PINCHROLLS
- DRUM HEIGHT ADJUSTMENT
- RUBBER COVERED CONTACT DRUMS
- 1 HARD DRUM (GRIND SLAG)
- 1 SOFT DRUM (WRAP EDGES)
- FAST ABRASIVE BELT CHANGE
- AUTOMATIC BELT TRACKING
- MOTORIZED LIFT W/DIGITAL THICKNESS CONTROL
- RUBBER CONVEYOR BELT

## OPTIONAL FEATURES

- MAGNETIC BED FOR SMALL PARTS
- DUST COLLECTION PACKAGE



## SPECIFICATIONS

- ABRASIVE BELT: 37"X60"
- DRUM DIAMETER: 6"
- FEED SPEED: 10-25 FPM
- BED OPENING: 0" TO 5"
- MINIMUM PART LENGTH: 8"
- FULL LOAD AMPS: 80 @ 230V/3/60
- COMPRESSED AIR: 2 CFM
- DUST COLLECTION: 1,000 CFM
- WEIGHT: 4,000 LBS

